



### Product features:

- Metal & ABS construction
- Custom designed for lower range pressures
- Thermostatic valve for safety & comfort
- The perfect combination of European design styles
- Supplied with adjustable centre inlets

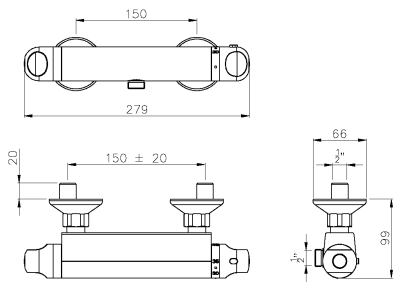
### Packaged properties:

**Box length:** 380 mm      **Box depth:** 75 mm  
**Box width:** 175 mm      **Boxed weight:** 1.36 kg

**Includes pop up waste?:** No

**Additional comments:**

### Product dimensions:



- Overall Height / projection: 99 mm
- Exit reach:
- Exit height:
- Centre distance(s): 150 ± 20 mm

- Base diameter(s): 66 mm
- Product mounted where: Wall
- Recommended hole diameter:
- Min. fitting depth required: 60 mm
- Max. surface depth:

Euphoria  
circular low pressure thermostatic bar shower

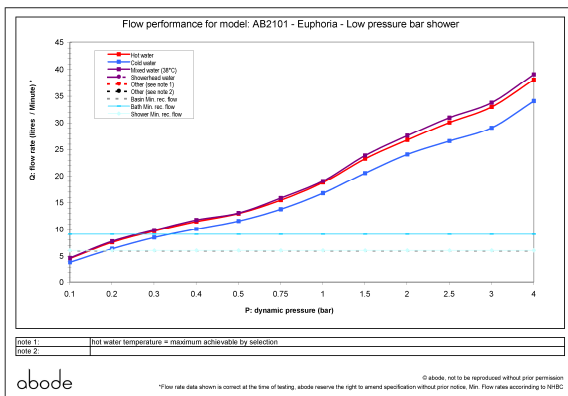
AB2101 v1

(c) abode home products ltd  
www.abode.eu

abode

our policy is to continually  
improve and develop products,  
and accordingly we reserve the  
right to amend specifications  
without prior notice

### Product flow characteristics:



- Min / Max water pressure: 0.20 / 5 bar
- Part G mixed flow rate at 3 bar (l/m): 33.7

- Max water temperature: 70° C
- Product flow characteristics:
- Aerator type:
- Includes output diverter?: No
- Control valve type: Thermostatic ( )
- Non return valve position: h&c inlet
- Mesh particle filter size: 0.60 mm
- Inlet / outlet size: 1/2" M /
- Inlet type / length: Eccentric / 50 mm
- Shower hose type / length:

### Warranty Summary (Full details available on request):

- Materials and workmanship defects warranted for 5 years
- Valves and working parts warranted for 2 years
- Surface warranty defects warranted for 1 year
- O-rings, hoses & gaskets warranted for 1 year

### Care instructions:

- Clean the mixers and showers regularly as required, using soap, do not use any other cleaners.
- Regular cleaning will prevent the build up of lime scale and dirt
- After cleaning rinse thoroughly with clean water to remove any cleaner residue
- Residues of liquid soaps, shampoos and shower foams can also cause damage, so rinse with clean water after using, avoid contact with any abrasives