

## **PRODUCT INSTRUCTIONS PPP - PROFESSIONAL POWER PLUNGER (Product Code 2161X)**

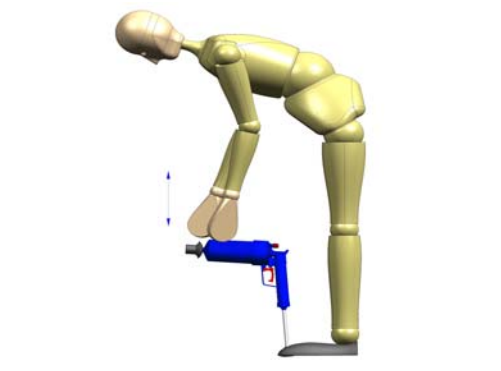
### **Safety Precautions**

- Compressed air can harm eyes and ears. Never discharge the PPP in the direction of people or animals. Keep out of reach of children. Do not leave a PPP charged with air in case it is picked up by child or unsuspecting person.
- The PPP is a powerful tool and should never be used as a toy or other than the use that it is designed for.
- Do not discharge the PPP in or near the eyes, ears or mouth.
- Do not use the PPP in conjunction with any chemical solutions that are damaging to eyes or skin. Wear safety goggles to protect eyes and gloves to protect your hands from possible splashes when using this product.

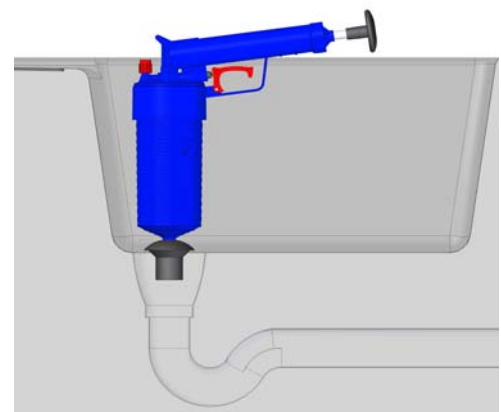
### **How to use the PPP- “BLAST IT WITH A PPP”**

The PPP works with compressed air by means of pumping the plunger. When the trigger is pulled **quickly** the compressed air is discharged at once *causing a shock wave through the water* to dislodge the blockage within the waste, even if it is past the trap, down the pipe-work and around several bends. To get the best from the PPP please read the notes below before use.

1. ***Fit Adaptor*** - Choose the correct rubber adaptor and fit to the PPP nozzle. The fitting of the adaptors is quite stiff, this can be made easier with a soap or silicon spray. The adaptor bungs are reversible to suit most waste outlets. If your outlet has a pop up, this will need to be removed before clearing.
2. ***Seal other Outlets*** - If you have an overflow outlet, or if the waste pipe is connected to other drain holes/overflow outlets in nearby equipment ensure they are covered because the pressure can result in accidental release of blocking residues at pressure.
3. ***Pump up the PPP*** - The PPP needs three pumps in quick succession to make air-tight the pressure release valve a further 1 to 4 pumps will give sufficient power in most cases. When clearing plastic plumbing wastes systems we recommend you start with minimal pressure – approximately three pumps should be sufficient.



3. ***“Blast it”*** - Place the rubber adaptor you have chosen firmly in the waste hole. Ensure it fits well over the waste hole and that the adaptor is submerged, press down firmly. Activate the trigger **quickly** to ensure sudden release of air pressure. If this does not clear the blockage on the first operation, repeat with a little more pressure.



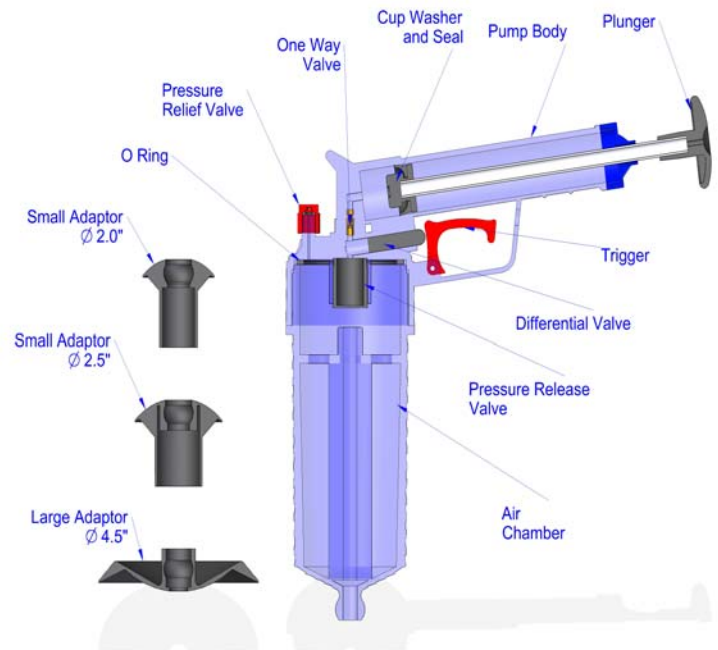
## Usage Notes

- The normal working range is recommended to be between 3 to 8 strokes of the pump.
- When using the PPP with a plastic waste pipe system use minimal pressure, repeat until the blockage is shifted. Stubborn blockages will also be shifted in this way.
- While getting accustomed to the power range of this product it might be prudent to place a container under the trap in case of a leak. You could also support the U bend so that the shockwave is transferred along the pipe instead of causing flexing in the pipe joints.
- Ensure that the waste system is sound and not leaking before you start work and check it when clearance is completed.
- The PPP can be used to clear slow running waste pipes that have deposits of grease and detergent. For example when clearing slow running wastes it is recommended that you adopt the following techniques:.
  - i) Let all the water run away first, then pop it with your PPP, add water and see the result. If this causes a full blockage this is an indication that the obstruction has collapsed off the side of the pipe and moved. Repeated pops should shift it.
  - ii) While the water is running away, follow the normal procedure.

## Troubleshooting

To check the PPP is working correctly:

- i) Ensure the Air Chamber is screwed on tightly then give three strokes of the pump. Wait for five seconds and then (taking note of the safety precautions) pull the trigger. There should be a distinct pop from the PPP. If not working check the position of the O-ring, check the seating of the Differential Pressure Valve Assembly and the function of the One Way Valve.
- ii) To activate the Pressure Relief Valve about 15-18 strokes of the pump is required; many more pumps than this would indicate air-loss or a worn Cup Washer & Seal.
- iii) Periodically the Cup Washer & Seal, One way valve, Pressure Release valve and the Differential Valve need to be cleaned and lubricated with Silicone spray or a light smea of Petroleum Jelly to ensure effective operation. (do not apply too much as this can impair the performance)



## Cleaning and Maintenance Tips

After use, a wipe with a damp cloth will usually suffice, ensure there has been no ingress of dirt or soiled water internally. In the case that the PPP has been completely immersed in water or contaminated, it is recommended that the Air Chamber is unscrewed, the O-Ring and the Differential Valve pressure release valve are removed and wiped or washed in warm soapy water. Ensure that the inside is then wiped dry, followed by an application of Silicon spray.

**DO NOT USE MACHINE OIL** on any of the valves or seals

Spare parts are available for the Professional Power Plunger  
Trigger, Differential Valve & O'ring.  
Rubber Adaptors.  
Plunger and Cup Washer & Seal