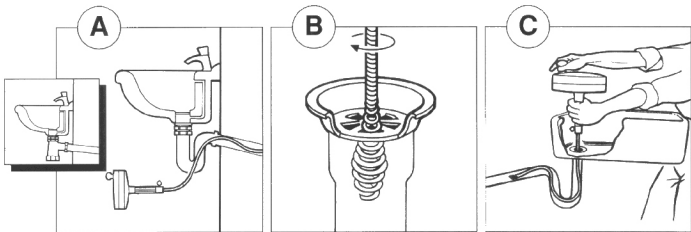


Drain Unblocker

EASY TO USE DRAIN UNBLOCKER FOR DOMESTIC PIPE BLOCKAGES. SUITABLE FOR DOMESTIC DRAINS, SINKS, BATHS, SHOWERS, ETC WHICH HAVE BECOME BLOCKED THROUGH EVERYDAY USAGE.

INSTRUCTIONS

- 1) Loosen silver locking screw at point of tool.
- 2) Pull out approximately 25cm (10 inches) of wire cable and tighten locking screw.
- 3) Where possible insert cable through 'U' joint beneath sink, bath, etc., (see diagram A). Otherwise insert tip of cable through centre of plug hole waste catcher and screw in by grasping the grip in one hand, the knob on the drum in the other hand, and turning the drum clockwise (see diagram B).
- 4) Once the tip is through, push the rest of the exposed cable into the plug hole whilst turning the drum.
- 5) Loosen the locking screw and pull more cable out of the drum, then relock the screw and push the cable further in whilst rotating the drum (see diagram C).
- 6) Continue procedure until pipe is unblocked.
- 7) Withdraw cable, turning it clockwise, wiping with a cloth before pushing back into drum. (Turn anticlockwise when withdrawing spiral tip through waste catcher.)
- 8) Once cable is recoiled in drum, soak whole tool in a bucket of disinfectant and then allow to dry.
- 9) Finally when dry, wipe cable and drum with an oily rag.



HELPFUL HINTS

- 1) Always check to see if you have a 'bottle trap' type of waste catcher under your sink, bath, shower etc as you must remove it and insert cable at that point (see Instruction 3 diagram A).
- 2) Wear rubber gloves when using drain unblocker.
- 3) After use, spraying with an aerosol lubricant prevents rusting.
- 4) Do not use in conjunction with acid or alkali drain cleaners as this will shorten life of product.
- 5) Not recommended for pipes larger than 3" (75mm) diameter.

NOTE : *When using the C-25PL with the drill attachment; use a variable speed drill on the slowest setting.*