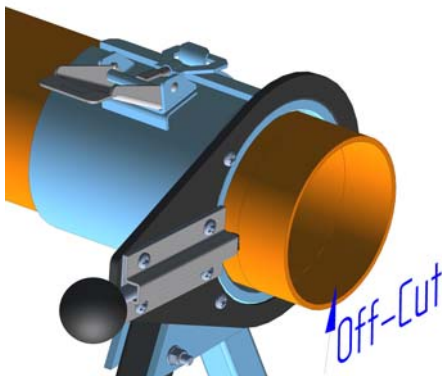


PRODUCT INSTRUCTIONS

Product Code :	PPC110	Product Description :	110mm Plastic Pipe Cutter / Beveller
----------------	---------------	-----------------------	---

ASSEMBLY

Fit the crossbar to the leg using the two bolts and locknuts. The other leg can be screwed or bolted to a suitable board for added stability.

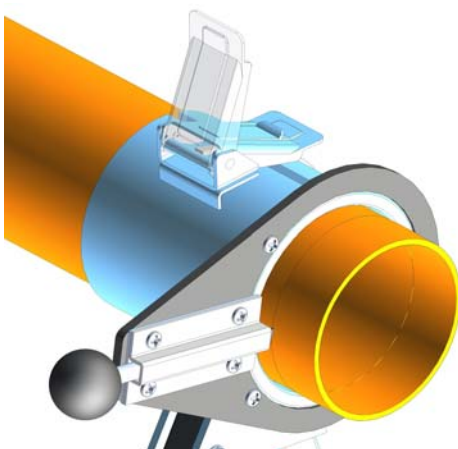
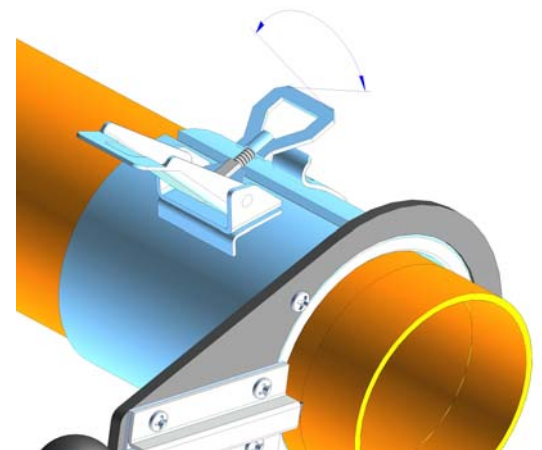


SET THE PIPE

With the toggle clamp set to an open position, and the cutting blade retracted, Slide the pipe into position so that the required length is positioned in line with the cutting blade

ADJUST THE CLAMP

If necessary adjust the clamp to suit particular sizes of the pipe. Turn the catch anti clockwise to reduce clamping force, turn the catch clockwise to increase clamping force. **Do not over-tighten the toggle clamp**

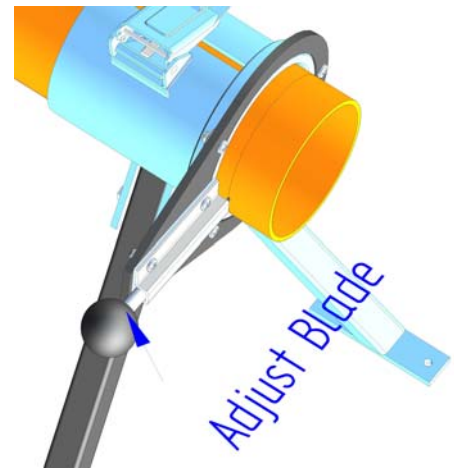
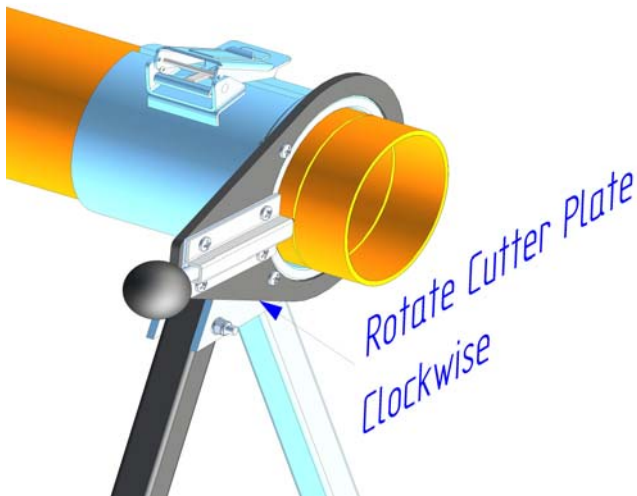


CLAMP THE PIPE

Secure the pipe by closing the toggle clamp.

SET THE BLADE

Position the cutting plate at a position where you can view the blade and turn the black plastic knob on the cutter plate clockwise until the point of the blade just touches the pipe.

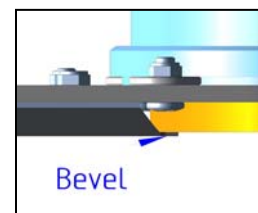
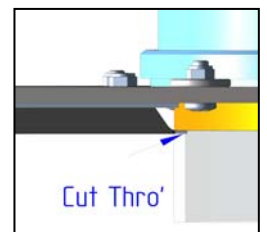
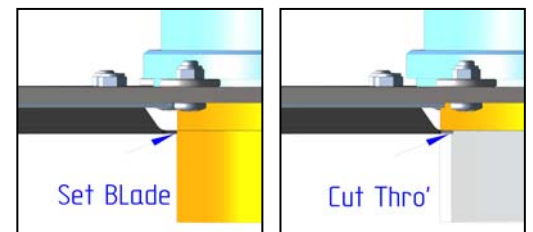


CUT THE PIPE

Place your foot on the crossbar to steady the pipe cutter and rotate the cutter plate one revolution in a clockwise direction to remove any high spots. Next, turn the black plastic knob on the cutter plate clockwise one turn for every one complete revolution of the cutter plate, trying to finish each cut where you started. Continue until the pipe is cut through.

BEVELLING THE PIPE

After cutting through the pipe, turn the black plastic knob on the cutter plate clockwise until the bevel shaped part of the blade is just touching the pipe. Turn the black plastic knob on the cutter plate clockwise another turn. With one foot on the cross bar to steady the pipe cutter, make one complete revolution of the cutter plate, finishing at the same position you started. Repeat until the desired bevel is cut.



MAINTENANCE

Clean & Oil sliding surfaces regularly. Whilst the cutting blade should perform approx 500 cuts before it needs attention, it can be sharpened by removing a small area on the cutting edge with a fine file or a fine grinding wheel. **Do not** sharpen any other part of the cutting blade.

Spares and Accessories

Blades – please quote part number PPC BL110 MK3 55M

Pipe Stand please quote PPCST useful for long sections of pipe.