



Clearwater Collection Installation and User Guide



Freestanding Excellence

Thank you for purchasing a Clearwater bath. All of our baths are made from two skins of acrylic and are proudly manufactured in the UK.

Before you start

Please note that this product has been through our rigid quality control procedures which include a thorough visual and physical inspection. Please unwrap the bath and check it carefully to ensure it has not been damaged in handling or transport which is beyond our control.

Claims regarding cracks and or face damaged must be reported within 24hrs of receipt of the product. No such claims will be recognised after installation as this is classed as acceptance of the product

Please do not remove the old fixture before you unpack and inspect the new unit. Upon receipt check for shortages immediately. Store the bath in a safe place until you begin installation to avoid damage.

Any installation should be carried out by a qualified tradesman with knowledge of statutory and plumbing requirements in your area.

Tools needed

- Spirit Level
- Set of screwdrivers, both flat and cross heads
- Adjustable Pliers
- Sharp knife
- Silicone sealant
- Drop cloth

Getting Started

Freestanding baths with feet

Certain Clearwater baths have been designed to fit feet, as shown in the picture below.



Follow these instructions to ensure the feet are fitted correctly to the bath.

1. Each style of foot varies, you may have a Cast Iron foot, chrome or gold plated feet. The Cast Iron feet come already painted with a silver primer. The primer is suitable to be left or can be over painted to the customers liking. The chrome and gold plated feet do not need any additional covering with paint.
2. The pictures below show how to attach the foot to the foot platform of the bath. All feet sets come complete with the following items, 4 x M10 bolts, 8 x penny washers, 4 x spring washers.

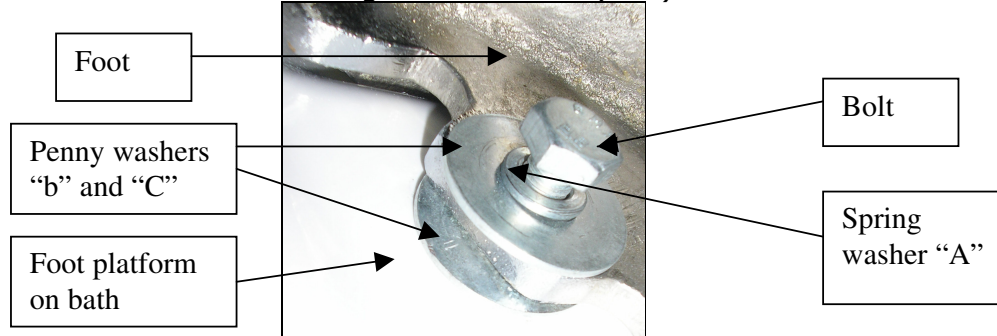
Using the drop cloth, turn the bath upside down and lay it on the drop cloth to ensure no scratches appear on the bath.



Pic (A)

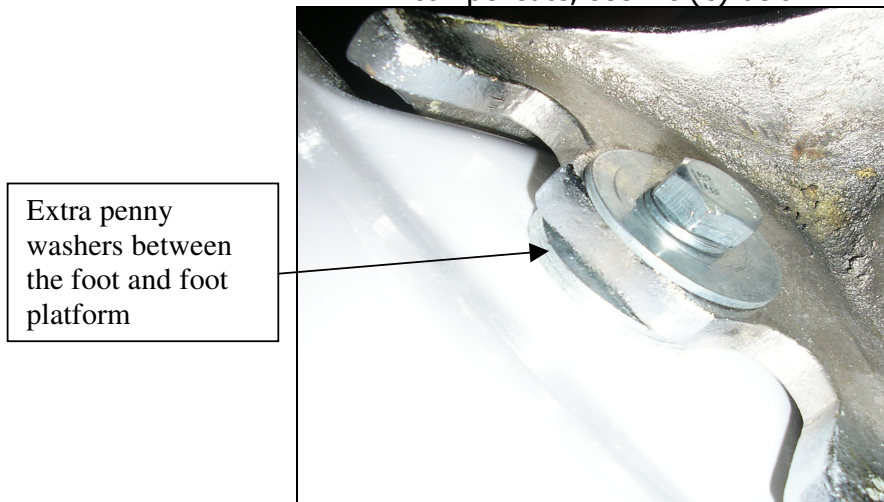
3. Pic (A) shows the foot platform. An M10 nut is cast between the two skins of acrylic. The nut cannot be moved or break free from the casting.

Freestanding baths with feet (cont)



Pic (B)

4. Pic (B) shows how to assemble the penny washers, spring washer, bolt and foot on the foot platform 1st. Place a spring washer "A" onto the bolt, then a penny washer "B" 2nd, place the bolt complete with spring washer "A" and penny washer "B" through the hole in the foot. It is easier to place the second penny washer "C" over the hole on the foot platform and then screw the bolt into the nut. Make sure you tighten the foot securely. The bolt and nut will take heavy tension.
5. If for any reason the bath does not sit level you may place extra washers (not supplied) between the foot and the foot platform to compensate, see Pic (C) below.



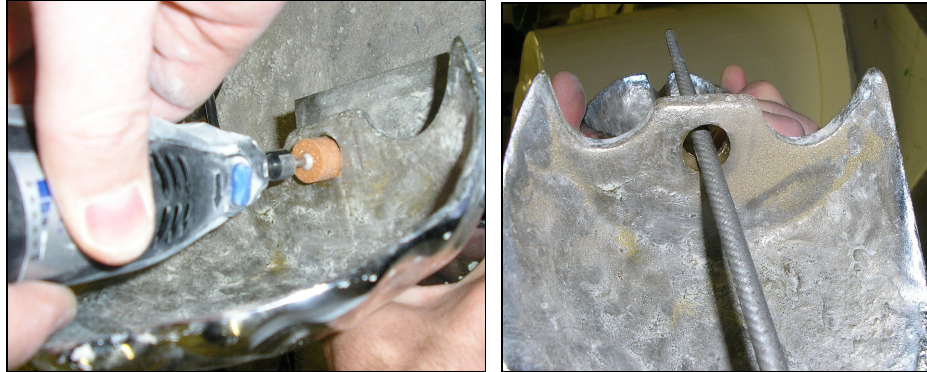
Pic (C)

Please note that Clearwater baths are designed to sit level on a flat surface.

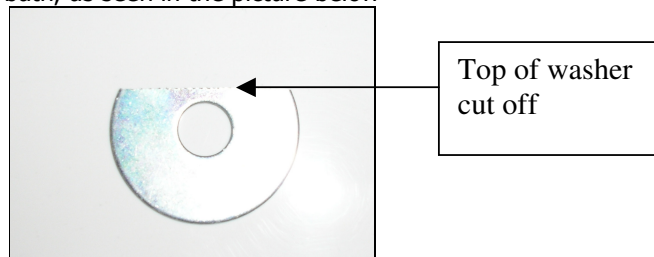
Baths with freestanding feet (cont)

Due to all Clearwater baths being hand made there might be slight variations from the specifications.

If the hole in the foot does not align with the hole on the foot platform, you may elongate the hole in the foot with either a drill or file as shown below.



The penny washers "B" may also be cut down to ensure the foot fits snug to the bath, as seen in the picture below



It is very important that your feet are fully secured to the bath prior to installation.

Plumbing the bath in

Again we recommend that the bath be fully installed by a professional/qualified tradesman.

Once the feet have been fully secured to the bath and the bath is in the general position ready to be plumbed in, we suggest fitting the waste and overflow to the bath.

Before you do this Clearwater insists you smear silicone sealant around the inside of the over flow, waste and tap holes (if drilled) to ensure a totally water tight seal. This is shown in the picture below.



You are now ready to fit the waste to the bath, please follow all waste manufacturers instructions. Please install the waste with silicone sealant not plumber's putty!

Securing the bath

It is very important that you secure your bath to the floor to stop it moving from its final position. Movement can cause leaks and spillages from both water and waste pipes. Due to each floor surface being different we recommend you secure your bath to the floor via its feet.

The feet have a "u" shape cut out where they meet the floor as seen in the picture below.



"u" shape slot

1. With the bath in position, mark out the "u" shape slots in the bottom of the foot by using a pencil.
2. Lift the bath out to reveal the pencil lines on the floor. We suggest the use of a plug and screw to secure the bath to the floor. Drill a hole relevant to the size of the plug, near the top of the "u" shape. Once the hole is drilled, insert the plug into the floor.
3. Place the bath back over the drilled holes and by using a correct sized screw and washer; screw the bath to the floor as seen in the picture below (not supplied).



This will secure the bath to the floor and stop it moving.

There are also several other methods of securing the bath to the floor for example; you can place a non skid pad under the foot and secure it with silicone sealant.

Once the bath is secure you can complete the water connections and final testing.

Care and maintenance of your bath

It is advisable always to run in some cold water before turning on the hot tap

All Clearwater baths are manufactured using two skins of acrylic. The acrylic has been tested to relevant British standards and once formed, acrylic can only be cracked by suffering some sort of impact, stress or chemical reaction.

The surface of the acrylic is very smooth and easy to clean. Clearwater suggests the use of a non abrasive cleaner. The cleaning of your bath should be on a regular basis.

Avoid cleaning products that contain acetone, ethyl alcohol, amyl or ethyl acetate, these products can damage the finish of the bath.

Do not use cigarettes near the bath, they could damage the finish.

In the event of slight scratches or marks in the bath surface, a mild polish similar to metal polish or car T cut can be used to polish the scratches and marks out. Deeper scratches can be brought out by the use of fine sandpaper (800 grit and above) and finish with the polish to rebuffer the bath to original shine.

Safety

- Make sure children are closely supervised in the bath
 - Never drop or insert any object into the bath
- Pregnant women should be careful of the temperature of the water when bathing
- Do not attempt to use/plug electrical items while in or near a filled bath.