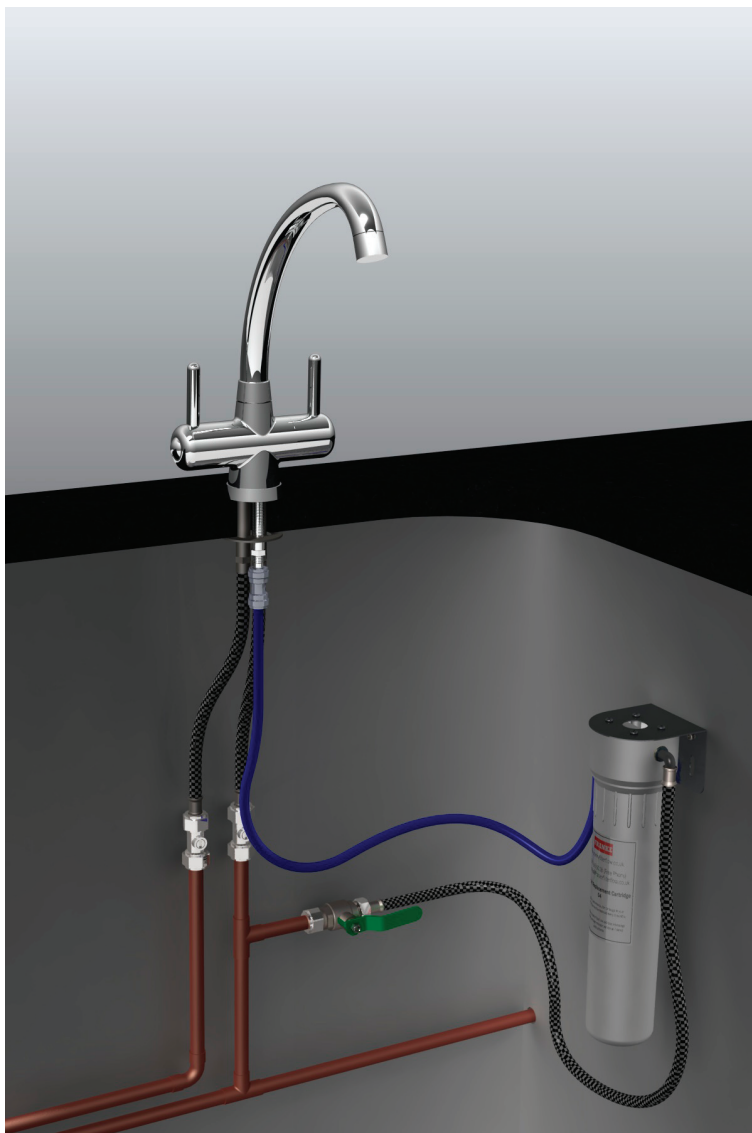


FRANKE FILTERFLOW ZURICH FILTER SYSTEM

Installation Guide & Technical Information



Please retain for future reference

THANK YOU FOR PURCHASING A FRANKE FILTERFLOW ZURICH FILTER SYSTEM

Your Franke FilterFlow water filter system is designed to connect exclusively to Franke FilterFlow kitchen taps. The component parts of the system are precision manufactured to the highest quality standard, using premium food grade materials. Correctly installed and maintained your Franke FilterFlow water filter will provide many years of trouble free use and a convenient, secure supply of high quality drinking water. Your Franke FilterFlow is supplied as a complete system with the parts required for connection to your Franke filter tap and the cold mains water, including a Franke multi-stage filter cartridge.

Replacement Filter Cartridges

We recommend that only genuine replacement cartridges and spare parts are used to service your Franke FilterFlow. These can be obtained on-line at www.FrankeFilterFlow.co.uk or call **freephone 0808 165 0008**

If you are considering carrying out the installation of your Franke FilterFlow water filter as a DIY project, we respectfully suggest you consider the risks associated with installing water appliances. Franke recommends you engage the services of a qualified installer to install and commission your Franke FilterFlow system.

Filter Cartridge Replacement Period

Franke FilterFlow filter cartridges should be replaced at 6 monthly intervals in order to maintain their filtration performance.

Please keep this guide in a safe place. It will enable you to get the best performance from your Franke FilterFlow filter now and in the future.

Register your Franke FilterFlow

We invite you to register your Franke FilterFlow purchase to access our free cartridge replacement reminder service and direct debit scheme. Register, online at www.FrankeFilterFlow.co.uk, use the **freepost** card provided, or call **freephone 0808 165 0008** and talk to a member of our customer service team.

SECTION 1: HOW THE SYSTEM OPERATES

The Franke 02 multi stage water filter cartridge* supplied as standard with your FilterFlow Zurich is capable of removing a wide range of possible water contaminants.

* For the Republic of Ireland, Franke FilterFlow systems are supplied with a Franke Franke 01 filter cartridge, to suit local water conditions.

The Franke 02 cartridge comprises an outer shell of micro porous ceramic enclosing an inner section of composite carbon block. This ceramic and carbon combination will reduce sediment, harmful bacteria, cysts, chlorine and lead.

The Franke 01 cartridge is an advanced carbon block with a red pre-filter wrap and mesh. This cartridge will reduce sediment, cysts, chlorine and lead and is suited to areas with low flow and high levels of sediment.

SECTION 2: IMPORTANT THINGS TO CONSIDER

Water Supply (Water Fittings) Regulations 1999

Familiarise yourself with the requirements of the Water Supply Regulations 1999: www.legislation.gov.uk/ukxi/1999/1148/contents/made

Maximum Working Pressure 6 bar/90psi.

Measure the pressure during the 'low demand' period, when the pressure will be at its highest- e.g. in the mid-morning, mid-afternoon or late evening. If the pressure exceeds 6 bar/90psi, it will be necessary to install a suitable pressure reducing valve in the supply line upstream of the filter stop valve.

A suitable pressure reducing valve is available online at www.FrankeFilterFlow.co.uk/accessories

Minimum Pressure 1.5 bar/23psi

This is the minimum pressure recommended to achieve an acceptable flow.

Filter Housing

The filter housing is precision engineered in ABS plastic and will require no routine maintenance beyond regular lubrication of the large sump 'O' Seal (see Lubrication below) and an occasional wipe with a damp cloth.

Important notes. Under no circumstances should the housing come in to contact with household cleaners as this may cause the housing to fracture. Plastic materials will degrade over time. Do not install the housing where it is permanently exposed to daylight, as over time extended exposure will degrade the plastic. As a precaution the housing should be replaced every 10 years.

Taking care of the blue flexible tubing

Although the tube can withstand significant water pressure do not stretch, kink or expose the blue plastic tubing to a naked flame during installation. Do not allow the tube to come in to contact with solvents and proprietary cleaners.

SECTION 3: PLANNING YOUR INSTALLATION

Although your Franke FilterFlow system is designed for ease of installation, careful planning and preparation before commencing the installation will ensure the procedure is straightforward and trouble-free.

Choosing the Location

Choose the most convenient place to tee into the 15mm cold water supply to install the stop valve. Decide the best place to position the filter unit within the kitchen cabinet. Bear in mind the need for easy access to make future filter cartridge changes a simple process. Ensure the braided flexible hose and the flexible plastic tube can be fitted without stretching or kinking.

Installing the Filter System above the Ground Floor

Extra care should be taken when installing water appliances above the ground floor. To reduce the risk of potentially catastrophic flooding, install an automatic shut-off device at the outlet of the filter stop valve.

Lubrication

Applying a smear of grease to the large 'O' seal on the head of the housing at each cartridge change will ensure the two parts of the filter housing are easy to separate and re-assemble.

Important. Use only WRAS (Water Research Advisory Service) approved silicon grease to lubricate the rubber seals as rubber and plastic parts will degrade and eventually fail if the wrong grease is used. A suitable grade of silicon grease is available to purchase online at www.FrankeFilterFlow.co.uk

Periods away from home.

If you are planning to leave the premises where the filter is installed for an extended period it is advisable to isolate the filter system. Turn off the water supply to the filter using the filter stop valve. Operate the filtered water tap on and off a few times to release the pressure in the system. When you return just turn the water supply back on and run the water for a few minutes.

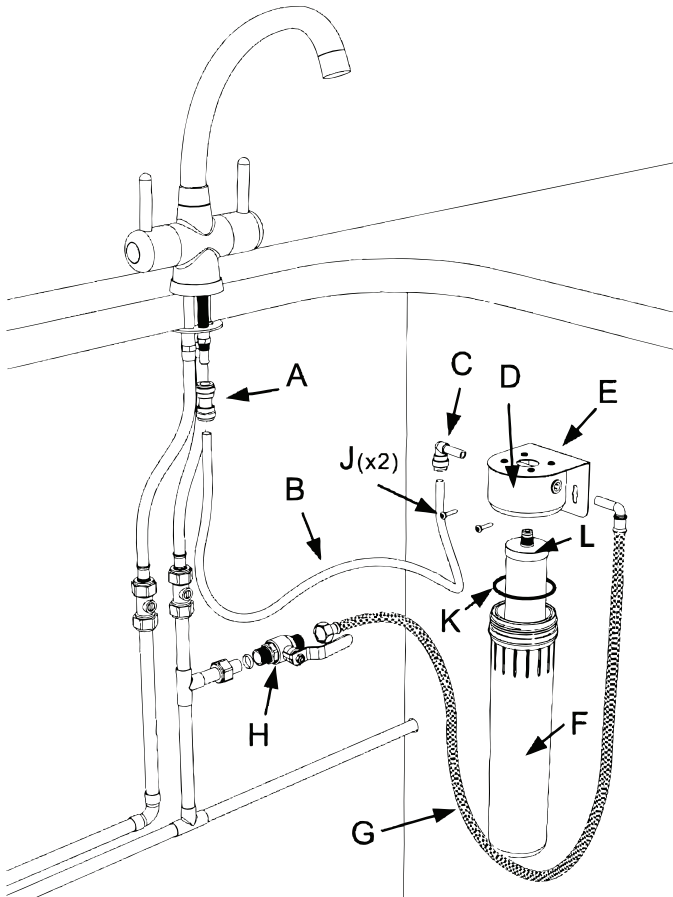
Backflow Prevention

To comply with UK Water Supply (Water Fittings) Regulations 1999, a suitable check valve (non-return valve) arrangement should be installed upstream of the filter stop valve.

Plumbing Connections

The stop valve supplied with the system is for connection to 15mm copper pipework. For alternative connection options please contact Franke FilterFlow customer service.

SECTION 4: PRINCIPAL COMPONENTS



	Zurich Tap	Supplied Separately
A	3/8" x 3/8" Push-fit connector	9.03001
B	3/8" Plastic Tube-Blue	9.03110
C	3/8" Push-fit Elbow	9.03400
D	Filter Housing Head	N/A
E	Bracket	N/A
F	Filter Housing Sump	N/A
G	Inlet Hose	9.28001
H	Stop Valve 15mm comp x 1/2" BSPM	9.13001
J	Wood Screws x 2	9.24001
K	'O' Seal for Filter Sump	9.07663
L	Filter Cartridge	Franke 02 (Franke 01 in Republic of Ireland)

SECTION 5: INSTALLATION

Shut off the mains water supply

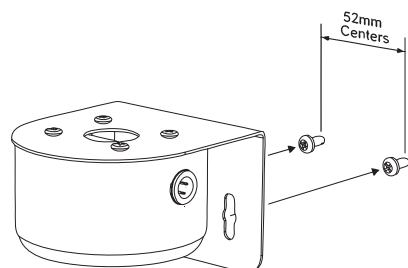
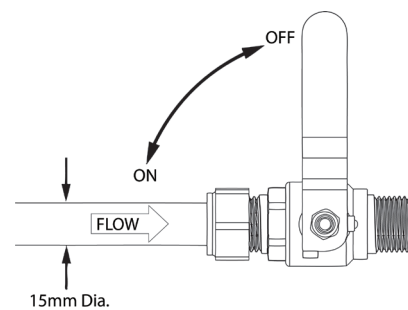
Install the stop valve

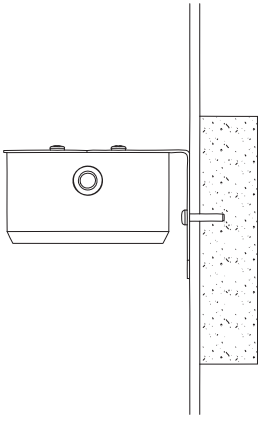
Install the stopvalve (H) in the chosen position in the adjacent 15mm pipework.

Note. For DIY installation a self piercing valve is available as an alternative to the stop valve; visit www.FrankeFilterFlow.co.uk

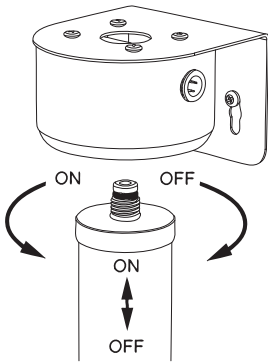
Secure the filter housing bracket

Unscrew the housing head (D) and separate it from the sump (F). Mark the positions for the two bracket supporting screws (J). Screw in both screws, leaving their heads protruding approximately 3mm to allow the bracket (E) to be easily lifted on and off the screws.





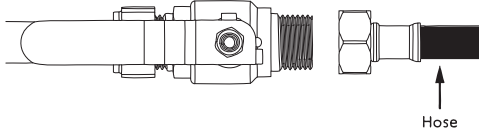
Note. Depending on the nature of the cabinet it may be necessary to position a batten behind the panel to make a secure fixing. Remember the weight of the housing will increase when filled with water.



Install the filter cartridge and assemble the filter housing

Unpack the new filter cartridge (L) and screw it into the housing head. Hand tighten the cartridge sufficient to make a watertight seal.

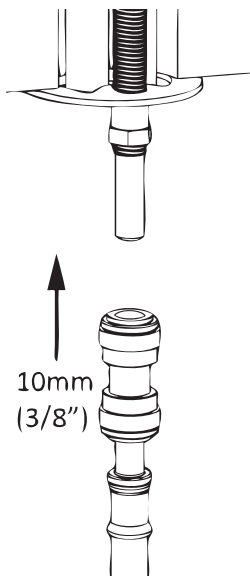
Important. Do not overtighten the cartridge. Over tightening may shear off the threaded section of the cartridge.



Connect the filter housing to the stop valve

Select the stainless steel braided inlet hose (G). Connect the end with the 1/2" BSP female nut to the male thread of the stop valve (H). Tighten the nut with a suitable spanner sufficient to make a watertight seal.

Important. Do not be tempted to over tighten the nut as it will distort the washer and cause the joint to leak.



Connect the filter housing to the filter tap

Take the grey 3/8" push-fit connector (A) fitted to the free end of the blue plastic tube (B). Locate the 3/8" diameter stem attached to the base of your FrankeFlow filter tap. Wet the stem with a little water. Engage the push fit connector on to the end of the stem and push it fully home.

Important note—making the push-fit connections. Make sure that the connector is pushed fully home on the 3/8" stem. Initial resistance will be felt as the stem engages the internal 'O' seal. It is essential to continue to push the stem fully home to the final stop to make a water tight seal. The stem should enter 10mm (3/8") when fully engaged. Failure to fully engage the connector may result in a water leak or failure of the joint.

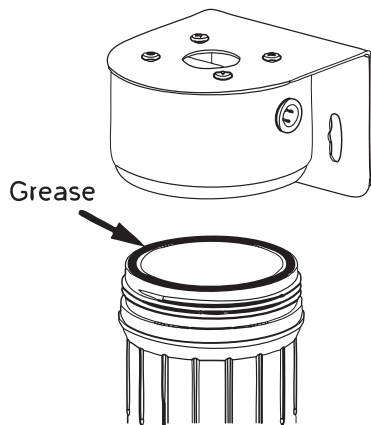
Turn the water on

Check to make sure all the connections are secure. Close the stop valve and turn the lever of your filter tap to the 'ON' position. Turn on the mains water supply and turn on the filter system stop valve. Check that the filtered water is running from the tap spout. Allow the water to run for a minimum of 5 minutes to flush the system before drinking the filtered water.

Important. for optimum removal performance adjust the stop valve to set the filtered water flow to fill a one litre jug in approximately 30 seconds.

Check the installation for leaks

Turn off the filter tap and carefully check the whole system for leaks; particularly at the connections to the stop valve, housing and tap. Turn on the filter tap and allow the filtered water to run for approximately 10 minutes to clear any manufacturing or installation residues. Your Franke FilterFlow water filter is now ready to use (as a precaution we recommend checking for leaks again before retiring for the night).



SECTION 6: MAINTENANCE

Routine maintenance

Apart from the scheduled filter cartridge replacement, the filter unit will require very little routine maintenance, beyond occasional lubrication of the head 'O' Seal (K).

Important. use only WRAS approved silicon grease for this purpose – an approved grease is available to purchase from Franke FilterFlow; visit www.FrankeFilterFlow.co.uk or contact customer service on **0808 165 0008**

SECTION 7: FREQUENTLY ASKED QUESTIONS

Limescale still forms in my kettle

The Franke 02 and Franke 01 cartridges supplied as standard with Franke FilterFlow systems will not reduce limescale.

They are first and foremost a health and security cartridge, designed to significantly reduce possible harmful waterborne contaminants in both hard and soft water regions. Calcium and magnesium, the minerals associated with limescale in water, are left intact as they are considered beneficial to health and contribute to its pleasant taste. However, if the cosmetic concern relating to scale reduction is your primary concern, you can switch to an Franke 05 Carbon DeAlk cartridge on your next cartridge change date.

Visit www.FrankeFilterFlow.co.uk for more information and to view the range of specialist cartridges..

Unsightly deposits on the surface of a cup of tea

In hard water areas a 'scum' can appear on the surface of hot tea. Although unsightly it is completely harmless. The cause is related to the precipitation of calcium and magnesium in hard water regions and a reaction with the tea bag material.

Changing tea bags will often remedy the problem. Alternatively you can consider switching to a Franke 05 cartridge (refer to previous paragraph).

Milky water

With a new system a significant amount of air is trapped in the microporous structure of the cartridge. This will form tiny bubbles and give the water in the glass a milky appearance that will soon disperse when left to stand for a few moments. This may continue for 2 to 3 weeks until the cartridge is fully conditioned.

Tiny black specks in the water

Tiny black specs may appear initially in the water. These are harmless particles of carbon; residues from the manufacturing process. Allow the filtered water to continue flowing for a while until they are completely flushed through.

The filtered water flow slows to an unacceptable level

Franke 02 cartridge– A significant reduction in flow is an indication that the ceramic shell of the cartridge is blocked with contaminants. This often occurs soon after a new system is installed due to plumbing residues, solder fluxes etc, becoming trapped on the surface of the filter cartridge. If this happens inside the recommended 6 month change cycle you may clean the cartridge to restore the flow. Remove the cartridge (refer to cartridge change instructions), hold the cartridge under warm running water and abrade the outer surface vigorously with a non soapy abrasive pad sufficiently to restore the white colour of the surface.

Franke 01 cartridge – The Franke 01 cartridge is not cleanable and will therefore need to be replaced once it becomes blocked with contaminants.

SECTION 8: CHANGING THE CARTRIDGE IN YOUR FRANKE FILTERFLOW

Cartridge Replacement Cycle

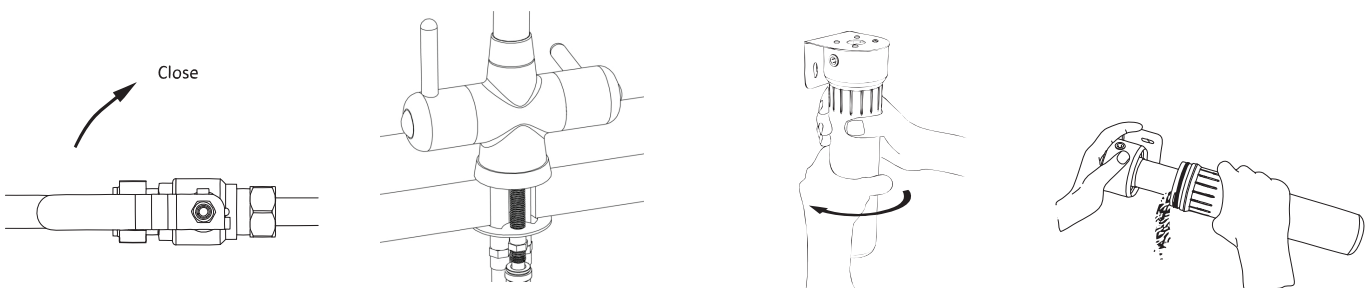
The recommended filter cartridge change cycle is 6 months.

Important: The period between cartridge replacements is not guaranteed; it is an estimate based on filtering mains water of average quality. Please bear in mind that water quality varies from locality to locality and situation to situation. In areas with higher than average turbidity (particle contamination) more frequent cartridge changes may be necessary.

Before you begin. No special tools are required for this operation. All you will need is a suitable receptacle to catch any spillage and a cloth or a sponge handy. A rubber glove is provided to hold the wet cartridge.

Lubricating the rubber seals. For ease of assembly we recommend that a film of silicone grease is applied to the filter housing 'O' Seal at least every other cartridge change to maintain the smooth operation of the unit. **Important note:** Only a WRAS approved silicon lubricant should be used for this purpose. Small tubes of a WRAS approved silicon grease can be purchased from Franke FilterFlow at www.FrankeFilterFlow.co.uk

Disposing of the Spent Cartridge. You may dispose of the cartridge in your normal household waste. Both the ceramic and carbon components of the Franke 02 & Franke 01 cartridges are biodegradable. You are welcome to return either the plastic parts or the complete cartridge to Franke FilterFlow for recycling. Should you decide to return the cartridge please allow it to dry naturally and return it in the original packaging.



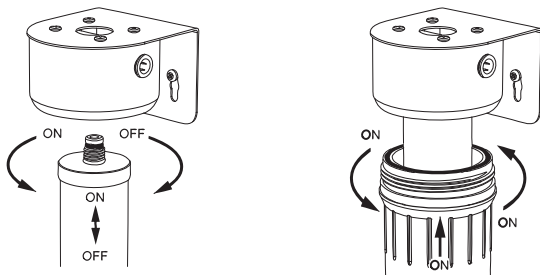
1. Locate the shut-off valve and turn off the mains water supply to the filter housing.

2. Activate the filtered water lever to "ON" to release the pressure in the system. Leave the tap in the on position.

3. Have a bowl to hand. Grip the sump firmly and turn it to the left, just sufficient to break the seal. Lift the filter housing assembly off its two supporting screws.

4. Hold the housing over the bowl and continue to unscrew sump. Carefully remove the sump and empty the water it contains. Set it to one side. Unscrew the filter cartridge and discard it.

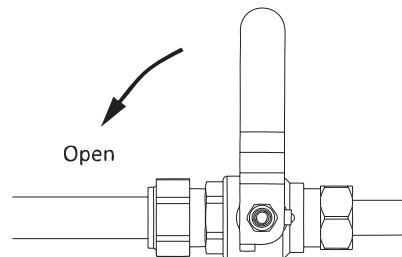
Important note. If the tap is not left on the pressure trapped in the system will make it impossible to unlock the filter housing sump from the head.



5. Screw the new cartridge in to the head. Tighten it firmly to make a seal. Do not over tighten as this may cause the threaded section to shear.

6. Screw the sump to the head and tighten it firmly. Re-mount the assembled housing on the two retaining screws.

7. Turn the water supply 'on' and check the system carefully for leaks. Leave the filter tap in the 'on' position and allow the water to run for a minimum of 10 minutes to flush the system. Check the flow rate. We recommend no more than 30 seconds a litre for optimum performance. If the flow is too fast it can be regulated by adjusting the stop valve.



Warranty

What is covered by the Franke FilterFlow guarantee?

- The repair or replacement of your drinking water filter system if your system is found to be defective due to faulty materials or within 5 years of purchase, at the discretion of Franke FilterFlow.
- If any part is no longer available or out of manufacture, Franke FilterFlow will replace it with a functional alternative.

Terms and conditions of the Franke FilterFlow 5 year guarantee

- The guarantee is valid for the UK and Republic of Ireland.
- The guarantee becomes effective at the date of purchase (or the date of delivery if this is later).
- Proof of purchase is required under the terms of the guarantee.

The guarantee provides benefits which are additional to, and do not affect your statutory rights as a consumer.

What is not covered by the guarantee?

- The Franke FilterFlow kitchen tap – see separate installation guide for tap warranty details.

Franke FilterFlow does not guarantee the repair or replacement of a product as a result of:

- Normal wear and tear.
- Accidental damage, faults caused by negligent use or care, misuse, neglect, careless operation or handling of the filter system which is not in accordance with the Franke FilterFlow operating guidelines.
- Use of the filter system for anything other than normal domestic household purposes.
- Use of parts not assembled or installed in accordance with the instructions of Franke FilterFlow.
- Faulty installation, repairs or alterations (not in accordance with the installation guide).

How do I make a claim under my Franke FilterFlow 5 year guarantee?

If you are in any doubt as to what is covered by your guarantee or wish to discuss a claim please call us on **0808 165 0008** between the hours of 9.00am and 5.00pm, Monday to Friday. If you are calling for the first time please have your receipt to hand so we can record your date of purchase.

The company reserves the right to alter, change or modify product specifications without prior notice.

Franke UK Limited
West Park, MIOC
Styal Road
Manchester
M22 5WB
Phone +44 (0)161 436 6280
Fax +44 (0)161 436 2180
Email info.uk@franke.com
www.franke.co.uk

Franke FilterFlow
3 Old Winery Business Park
Chapel Street
Cawston, Norfolk
NR10 4FE
Phone +44 (0)808 165 0008
Fax +44 (0)844 358 0166
Email info@frankefilterflow.com
www.frankefilterflow.co.uk



KITCHEN
SYSTEMS