



Showerwall

INSTALLATION INSTRUCTIONS



This leaflet must be read thoroughly before commencing installation.

Please read the following guide before fitting Showerwall panelling.

It is important that you follow and adhere to all of the instructions to ensure the most effective use of the product.

IMPORTANT: To maintain the validity of your guarantee you MUST follow the installation instructions provided.

- DO**
- ✓ Always store Showerwall panels flat to prevent bowing.
 - ✓ Acclimatise the panels for 24 hours prior to installation.
 - ✓ Use the recommended silicone and adhesive products.
 - ✓ Inspect each panel for manufacturing/material surface defects prior to installation.
- Should you find a fault, please refer it to your supplier immediately who will assess the problem.**

- DON'T**
- ✗ Store the worktop outside or in wet / humid conditions.
 - ✗ Store the product vertically or propped against a wall.
 - ✗ Fit tongue and groove panels directly to the wall or ceramic tiles. Battens **MUST** be used to fit tongue and groove panels.
 - ✗ Use abrasive cleaners and bleaches.

RECOMMENDED PRODUCTS TO FIT AND MAINTAIN SHOWERWALL PANELLING

It is recommended that Showerwall's own brand of adhesive, sealants and cleaner are used for the effective fitting of the product.

For a 1000mm wide panel, approximately 1 cartridge of Showerwall adhesive and 1 cartridge of Showerwall sealant is required. The hardwearing surface of the panelling can be hygienically cleaned with Showerwall spray cleaner which is a mild non-abrasive cleaner with an anti-bacterial agent.

Abrasive cleaners and bleaches must NOT be used on Showerwall panelling.

Showerwall sealant forms a strong secure bond even between two non-porous surfaces.

Showerwall sealant has a high degree of elasticity, which ensures that the bond remains firm during the natural expansion and contraction of the panelling.

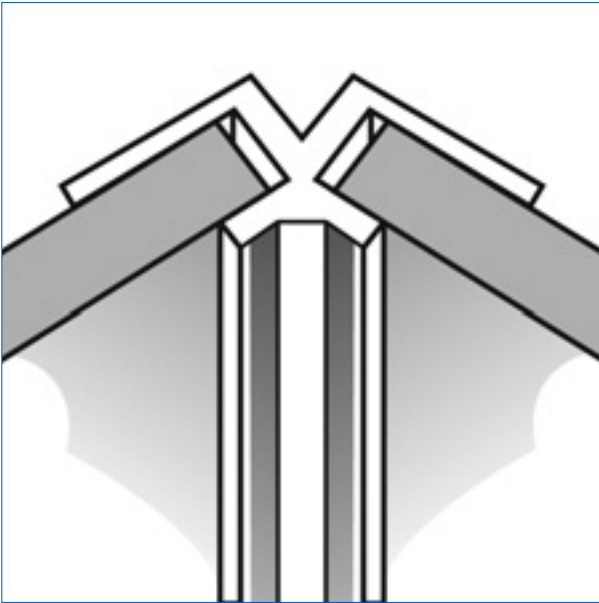


IMPORTANT Failure to follow the Showerwall Installation Instructions can result in the following problems:

- Delamination of panels
- Bowing
- Colour fading
- Protruding across the joints of the Showerwall panel

Available colours

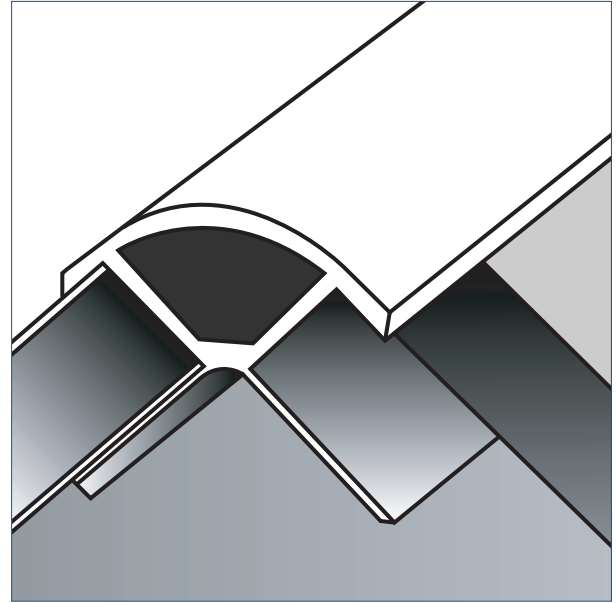
- ▶ BRIGHT SILVER ▶ SATIN SILVER ▶ GLOSS WHITE ▶ ANTHRACITE SILK ▶ ANTIQUE GOLD



Internal corner

2450mm

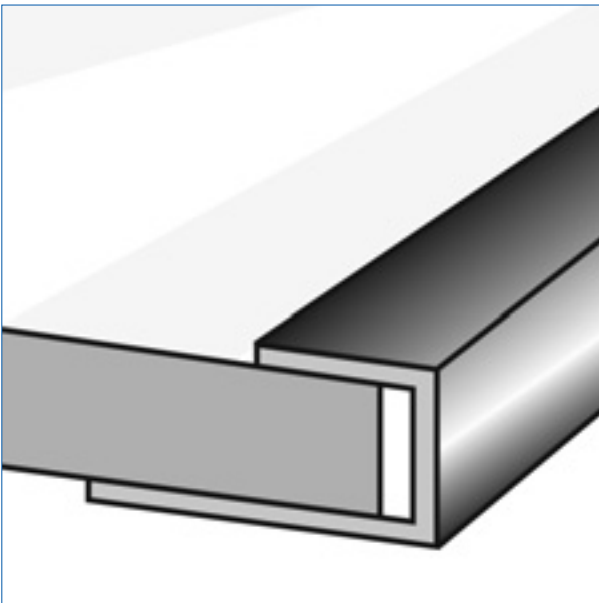
Used on all internal 90° corners. Seal with Showerwall sealant.



External corner

2450mm

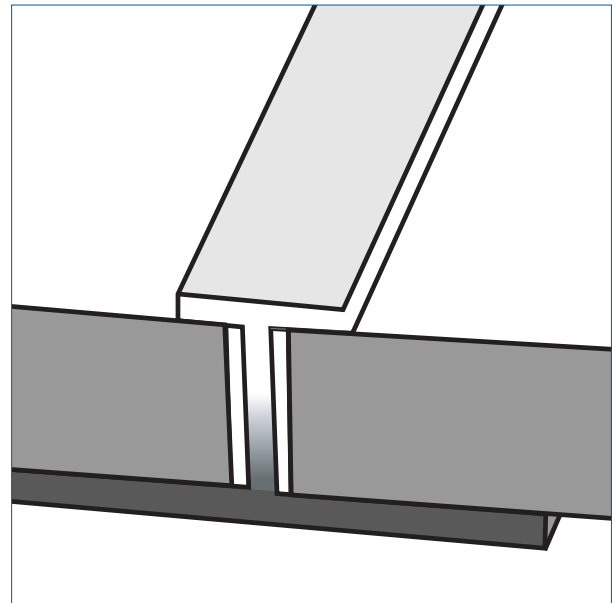
Used on external 90° corners. Seal with Showerwall sealant.



U-Trim

2450mm

Finishing end cap for square cut edge panel. Seal with Showerwall sealant.



Joining and stacking profile

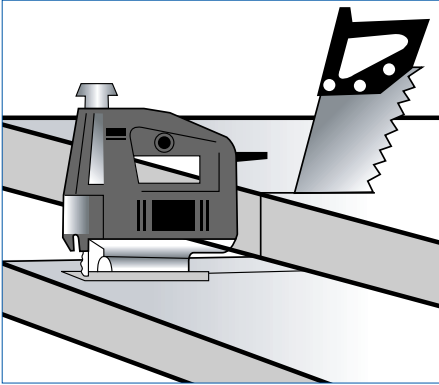
2450mm

Used to mount panels side by side, or above each other.

All trims are designed for use in wet and dry panel situations.

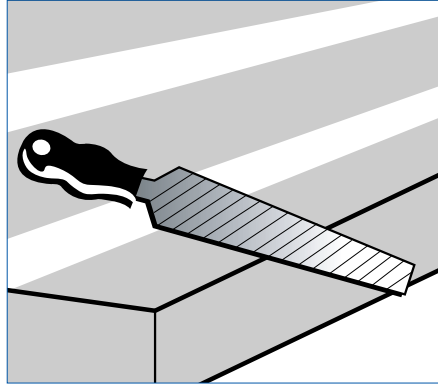
STEP 1 PREPARATION

PANEL PREPARATION



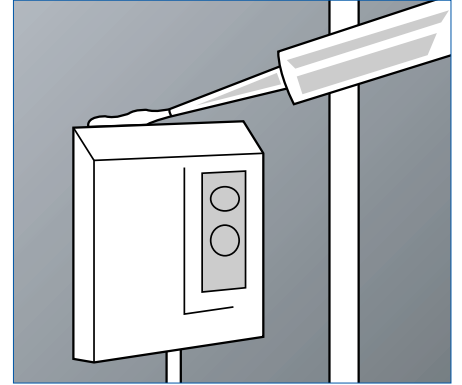
Cutting panels

When cutting the panels to width and height with a handsaw, the decorative face should be upwards. When cutting with a jigsaw or circular saw, the decorative face should be downwards.



Finishing a cut edge

File the panel edge at a slight angle away from the laminate edge.



Pipes and accessories

Leave a 3-4mm clearance around all pipes and accessories and seal with a bead of Showerwall sealant. If a collar is to be fitted first seal with Showerwall sealant.

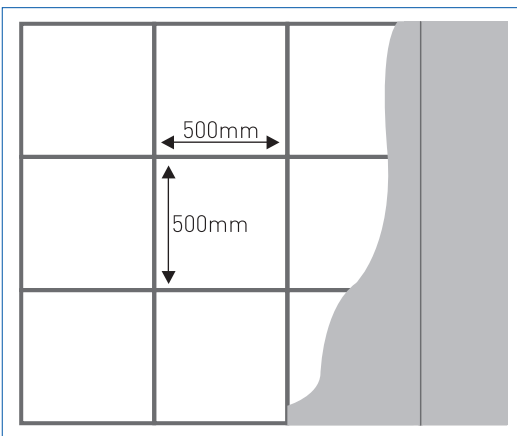
STEP 2 FIXING

FIXING OF PANELS

Check before and during installation for visible defects in the panels.
Once fitted, it is assumed that all installed panels and trims are satisfactory.

USING SHOWERWALL ADHESIVE

It is recommended that the panels should be fixed to treated battens using Showerwall adhesive to provide an airspace behind the panels. Treated timber battens approximately 50mm x 25mm should be fixed horizontally with one at the head and base of the panels with additional horizontal battens at a recommended distance of 500mm apart. They should be plumb and parallel to each other to give a solid ground for fixing the panels with Showerwall adhesive. Wash hand basins, towel rails and other heavy items should have additional battens behind them to give a secure fixing.



FIXING WITHOUT BATTENS

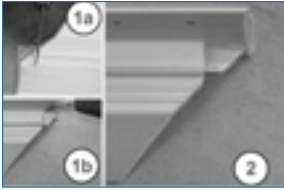
If fixing to the walls without treated battens it is essential that all walls are completely dry and clean before cladding with Showerwall panels. Any source of dampness MUST be treated before fixing. If fixing direct to a tiled surface it must be sound and degreased.

It is recommended that Showerwall sealant is used when sticking Showerwall panels to ceramic tiles.

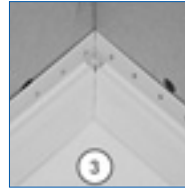
All surfaces must be flat and clean from dirt and dust. If the walls are uneven and out of plumb treated battens must be used as a fixing method. When fitting treated battens it must be ensured that they are fixed level and square.

STEP 3 FOR SHOWER SEAL APPLICATIONS

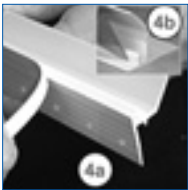
Shower Seal is a 2 part shower tray and bath sealing system. It comprises a PVC strip and high performance Showerwall white silicone. Showerwall recommend Shower Seal for use on all applications around showers and baths.



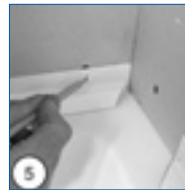
1&2. Measure and cut strips to length and notch corners as shown.



3. Lay strips in position to check mitre cuts and notches match. With the strips in position, lightly mark the ledge (at 3 points per strip) to define the outer edge of each strip on the ledge.



4. If outer edge of the strip is not resting on the ledge, score and tear off the removable inner leg as shown.



5. If strips are not pre-punctured for nailing/screwing to wall, mark strip upstand between 2 guidelines where secure fixings can be found in wall and drill holes in strip to accommodate your screw/nail type.



6. Wipe ledge with alcohol wipes or methylated spirits.



7. For a 3-sided shower, commence installation with middle strip. Insert middle strip upside down into the mitre box and arrange to support remainder of strip steady. Resting nozzle on strip lay an 8mm diameter line of sealant in strip 400mm long.



8. Spread/level sealant across strip with spatula as shown in pictures 8a and 8b. Redistribute or add sealant as required. Continue in 400mm steps until complete. Ensure sealant is buttered flush with ends of strip.



9. With finger under nozzle and fingertip against wall as guide, lay a straight 8mm line of sealant on the ledge just inside the 3mm marks indicating the outer edge of the strip. Lay a 5mm line of sealant (roughly) 15mm over ledge.



10. Rotate strip into position as shown fusing the sealant in strip with the sealant on ledge to form a watertight seal. Nail/screw strip to wall. Remove sealant on ledge (if any). Carry out same procedure for remaining strips. Butter mitre joints with sealant to ensure fusion of sealant across corners.



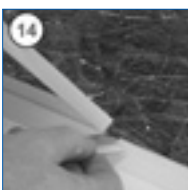
11. Apply sealant to fill the notch at corners.



12. For a 3-sided shower, commencing with the middle strip, lay a solid continuous line of sealant in the channel formed between the strip upstand and the adjacent wall panel support leg.



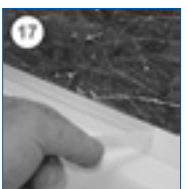
13. Prepare the middle panel for fixing as per manufacturers instructions. Locate panel in correct position on strip. Fix panel and remove any sealant squeezed out between the strip and panel. Carry out same procedure for remaining panels.



14&15. Lay masking tape over lower joint and run blade along respective corner to trim as required.



16. Apply sealant firmly into joint and rub silicone firmly into joint leaving smooth.

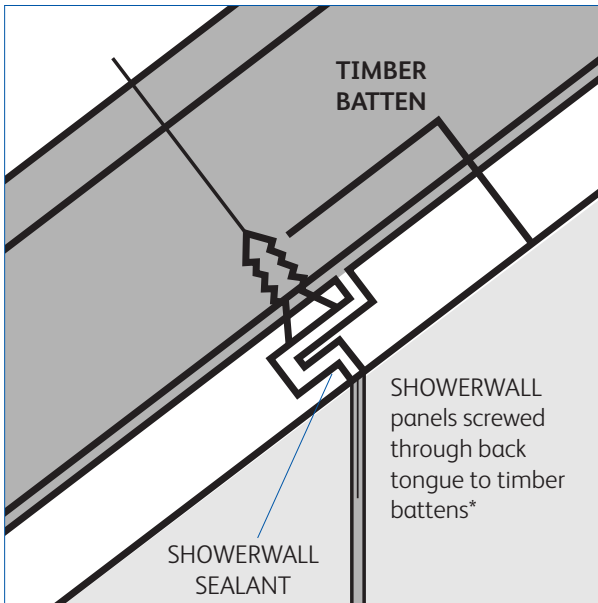


17&18. Remove masking tape and give sealant a final light rub up.

STEP 4* TONGUE AND GROOVE

*Depending on chosen style.

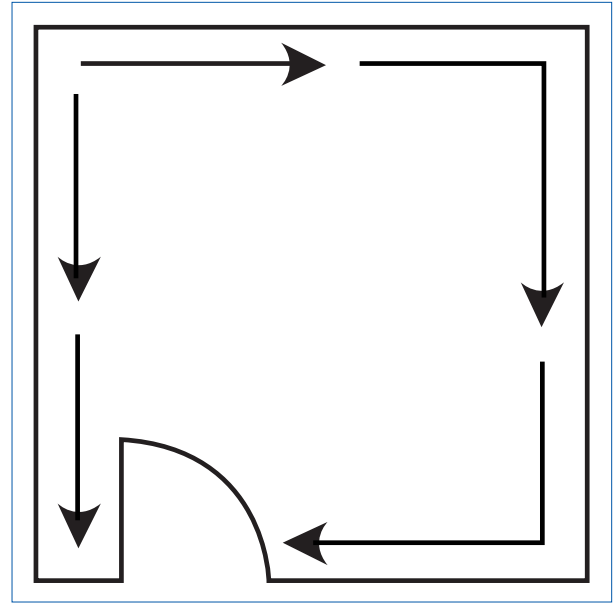
PANEL INSTALLATION



1. Tongue and grooved

Vertical edges tongued and grooved giving finished panelling a smooth, easily maintained surface. Each panel has asymmetrical tongued and grooved vertical edges to give 5mm of joint overlap. When sealed with Showerwall sealant a waterproof joint is assured.

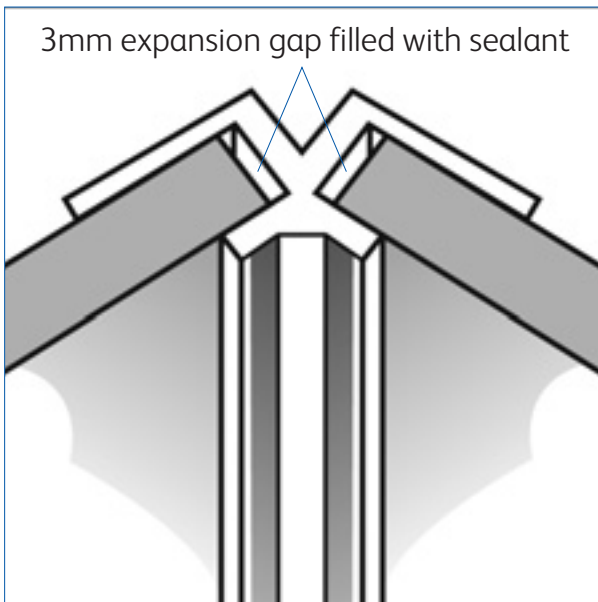
*Counter sunk screws must be used



2. Where to start

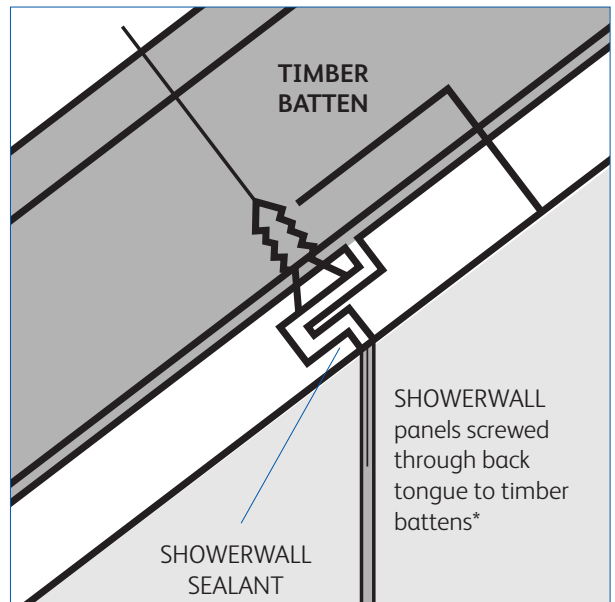
Start at the corner furthest from the door, panel in both directions around the room. The last panel is fitted above the doorway, placed in position tongue first and swung into position. All panels must be correctly aligned and plumb, allowing for 3mm expansion gaps.

Fix panels to battens using Showerwall panel adhesive. Seal all panel joints using Showerwall sealant.



3. Begin panelling

First fix a Showerwall internal corner profile in position ensuring that it is plumb. Apply Showerwall sealant to the recess of the profile. Apply Showerwall adhesive to the battens. Insert the first panel after removing the smaller tongue, or cutting to size. Then continue to panel away from the corner in both directions, fixing panels to battens with Showerwall adhesive, and sealing joints with Showerwall sealant. Allow for 3mm expansion gaps, filled with Showerwall sealant.



4. Continue panelling

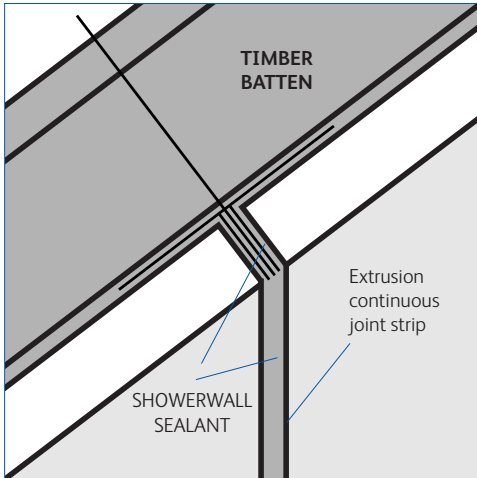
Continue panelling around the room fixing each panel to the battens with Showerwall adhesive, and/or screws through the back lip of grooved edge. Seal tongue and groove joints using Showerwall sealant.

Use internal and external corner profiles, sealing with Showerwall sealant, where appropriate.

*Counter sunk screws must be used

STEP 4* SQUARE EDGE

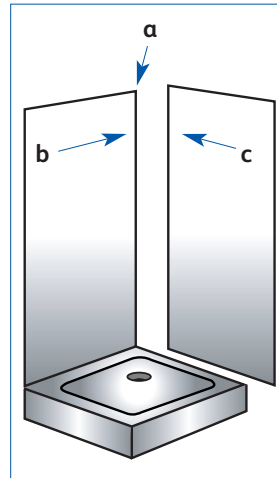
PANEL INSTALLATION



Square cut shower panels

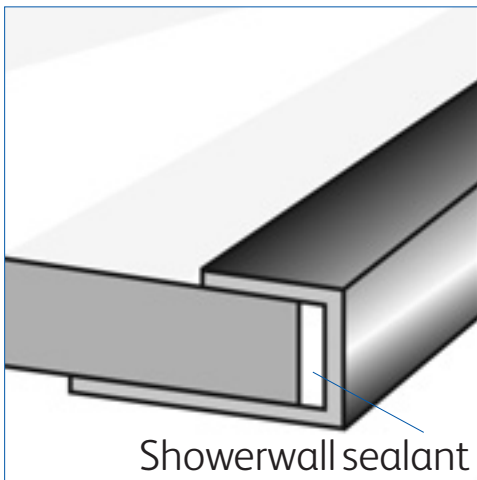
Square cut shower panels are easily cut on-site. The edges being covered by Showerwall aluminium trim extrusions. This will facilitate for faster installation.

*Depending on chosen style.



Two sided shower

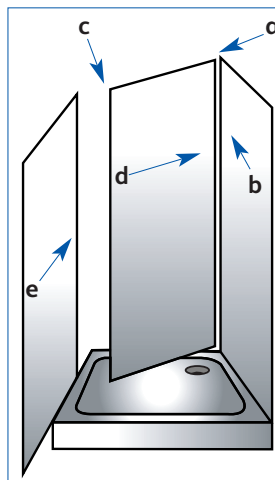
1. Fix an internal corner profile (a) into the corner. Apply a bead of Showerwall silicone sealant into one channel of the profile.
2. Remove the protective film from the face of the panel.
3. If end cap profiles are required, they must be fitted to the exposed edge of the panel prior to fixing.
4. Apply a bead of Showerwall silicone sealant into a channel of the profile.
5. Apply a generous amount of Showerwall adhesive to the back of the first panel (b) then insert into the corner profile ensuring there is a 3mm clearance at the bottom and fix the panel to the wall.
6. Apply a second bead of Showerwall silicone sealant into the other channel and fix the second panel (c) as above.
7. Once the panels are fixed sealing must be carried out as detailed above.



Finishing touches U-Trim

Finish outer panel edges with U-Trim, applying a generous bead of Showerwall sealant into the U-Trim. Seal all gaps around the tray with Showerwall sealant prior to installing the shower door or side panel.

Note: Do not fit and sit panels directly on top of bath or shower tray – allow 3mm expansion gaps.



Three sided shower

1. Fix an internal corner profile (a) into one of the corners. Apply beads of Showerwall silicone sealant into both the channels of the profile.
2. Remove the protective film from the face of the panel.
3. If end cap profiles are required, they must be fitted to the exposed edge of the panel prior to fixing.
4. Apply a bead of Showerwall silicone sealant into a channel of the profile.
5. Apply a generous amount of Showerwall adhesive to the back of the first side panel (b) then insert into the corner profile (a) ensuring there is a 3mm clearance at the bottom and fix the panel firmly to the wall.
6. Apply a bead of Showerwall silicone sealant into the other internal corner profile (c) and fix to the edge of the back panel (d). Apply a generous amount of Showerwall adhesive to the back of the panel.
7. Insert the exposed edge of the back panel into the remaining channel (a) of the first profile and swing the panel into place against the back wall.
8. Apply a bead of Showerwall silicone sealant into the remaining channel (c) and fix the second wall panel (e).